



IMPORTANT KEEP FOR FUTURE REFERENCE

Read these instructions carefully before use and keep them for future reference.

Your child's safety may be affected if you do not follow these instructions.

Instruction Leaflet

Lullaby Swing

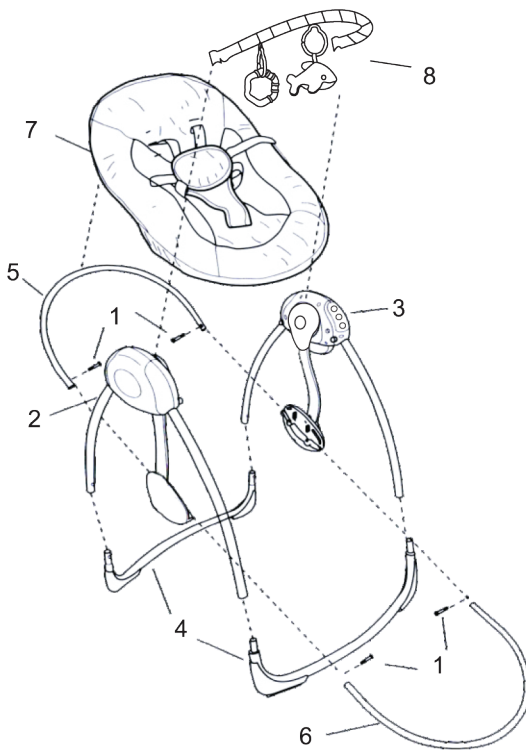


This swing is intended for use by babies from birth to 6 months weighing less than 9kg (20lbs), who cannot sit up unaided.

Complies with BSEN 16232 : 2013
Customer Care Line: 01454 326 568

Parts List:

No	Qty	Description
1	4	M4 Phillips screw
2	1	Left frame
3	1	Right frame (with control module)
4	2	Base frame tube
5	1	Backrest tube (longer)
6	1	Footrest tube (short)
7	1	Seat pad
8	1	Toy bar with toys

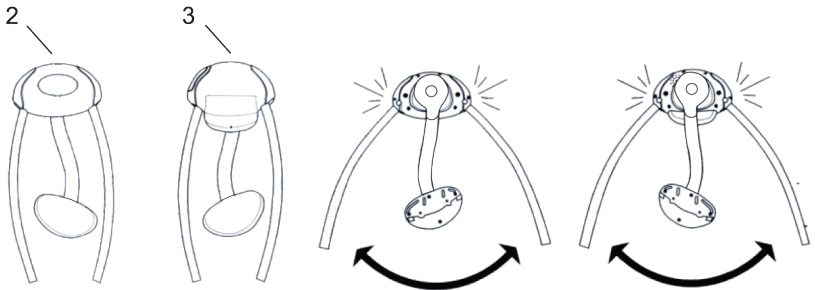


Not Included:

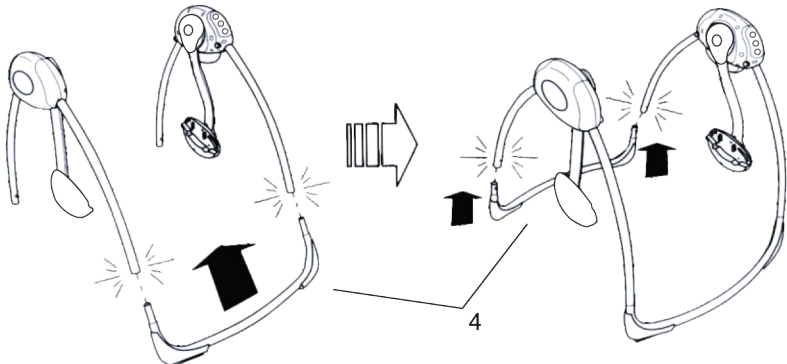
4x  1.5V
AA



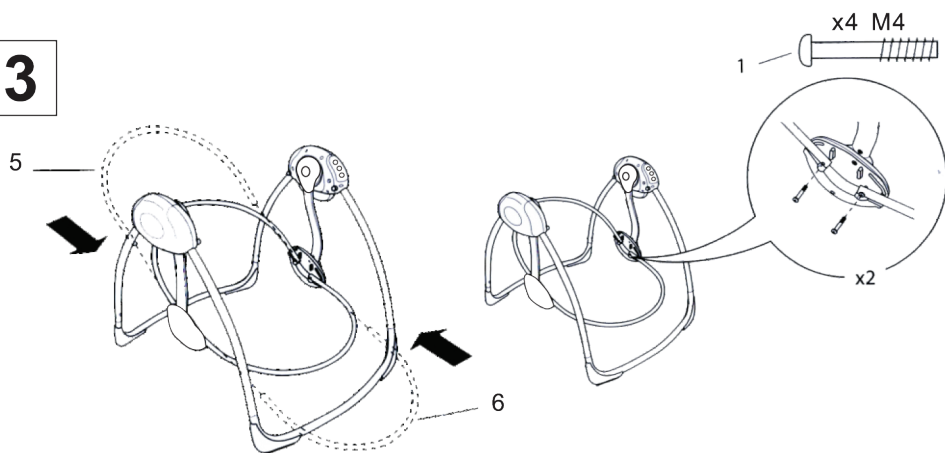
1



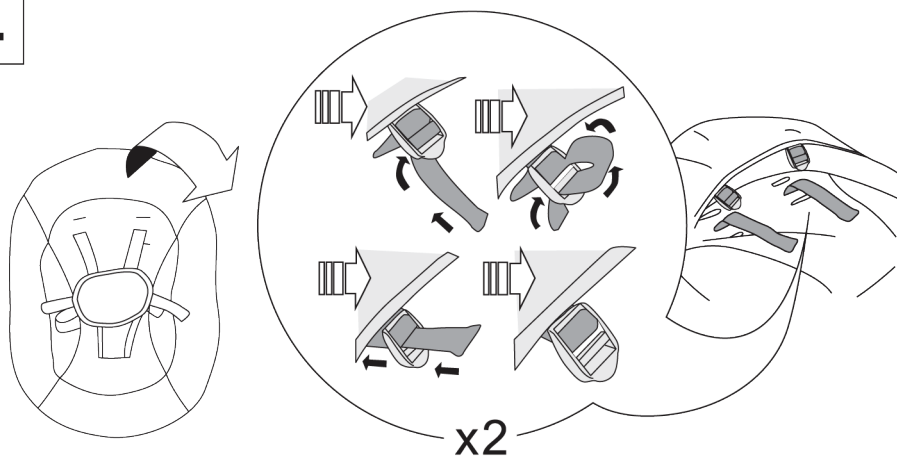
2



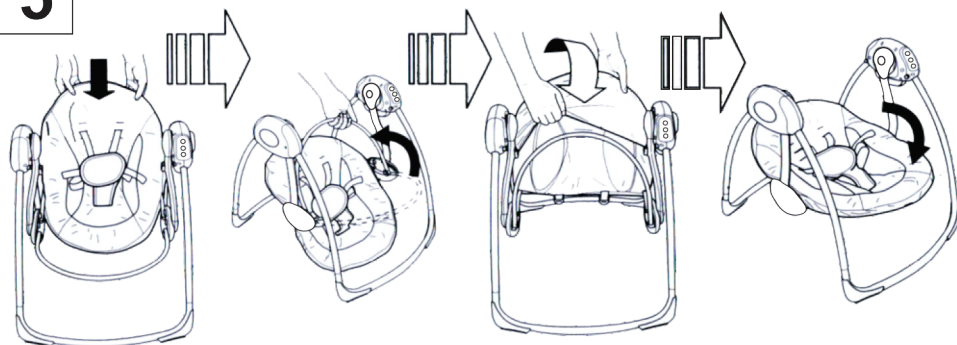
3



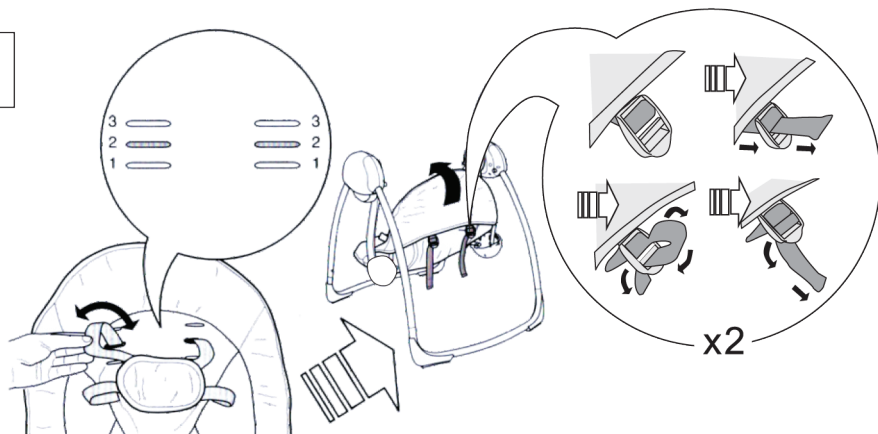
4



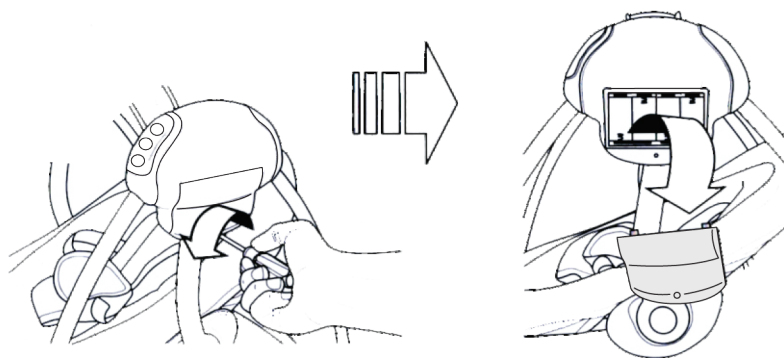
5



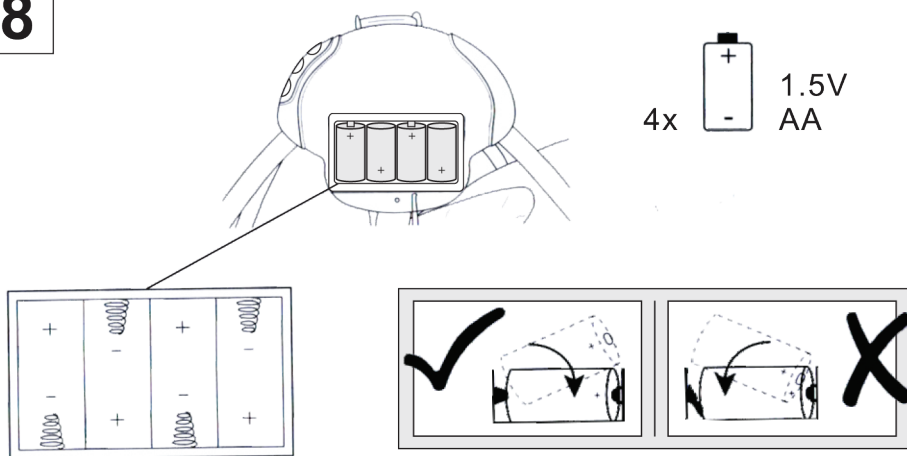
6



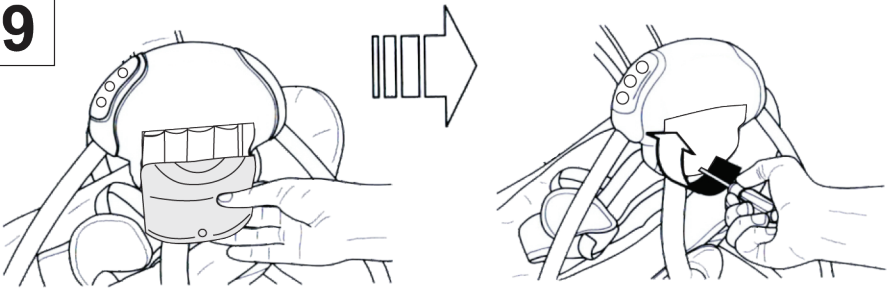
7



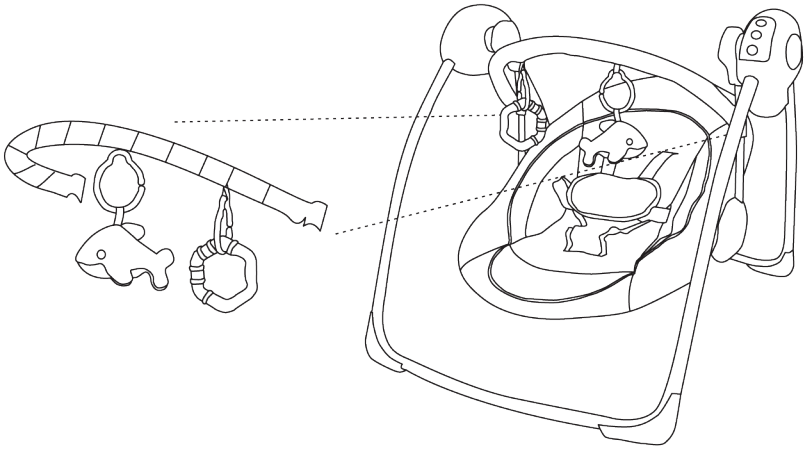
8



9

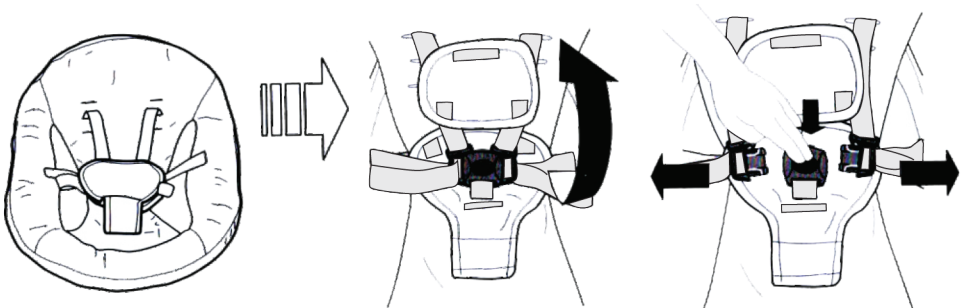


10

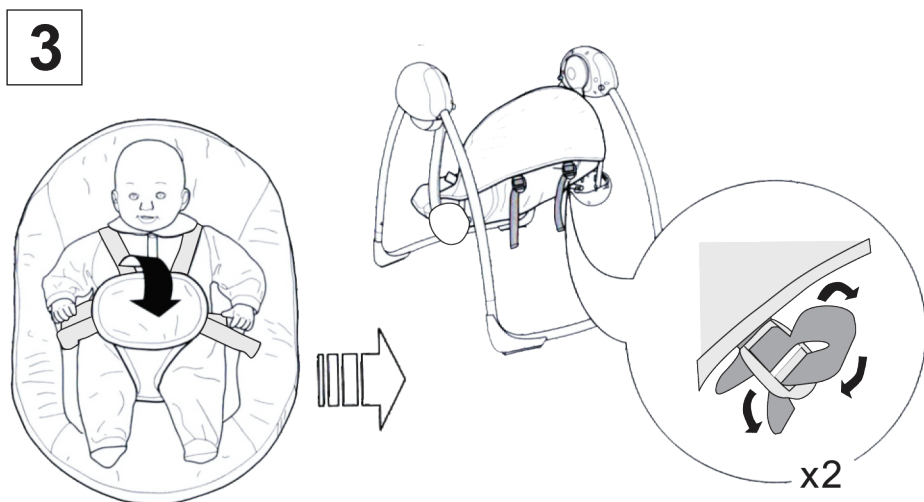
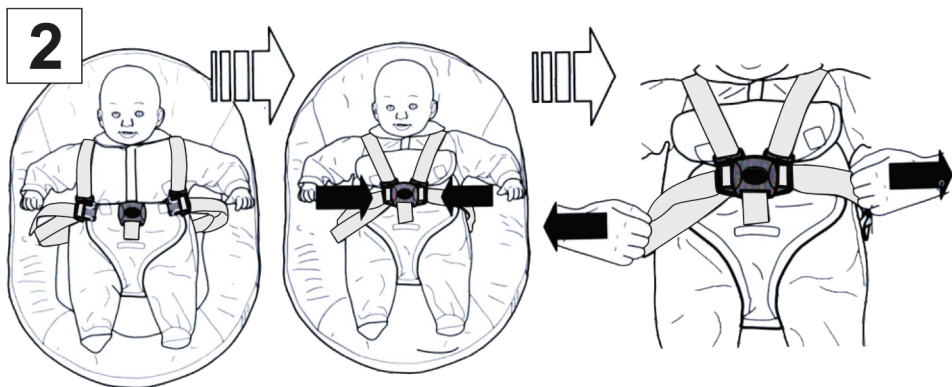


1

Using the seat restraint



WARNING! Always use the harness



Swing controls

Music controls

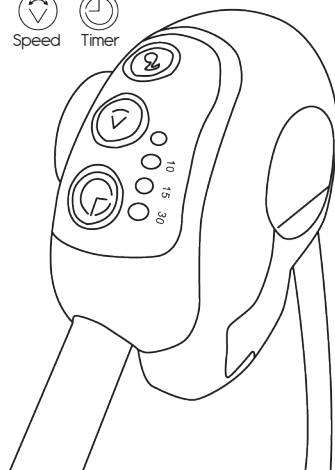
- 1 To switch on, press and hold the on / off button. *The seat will start to swing and the melodies will begin.*
- 2 Press again to change the melodies.
- 3 Press for a third time for even more choice in melodies.
- 4 Press for a fourth time to turn the melodies off. *The seat will still swing.*
5. To switch off, press and hold the on / off button.

Speed controls

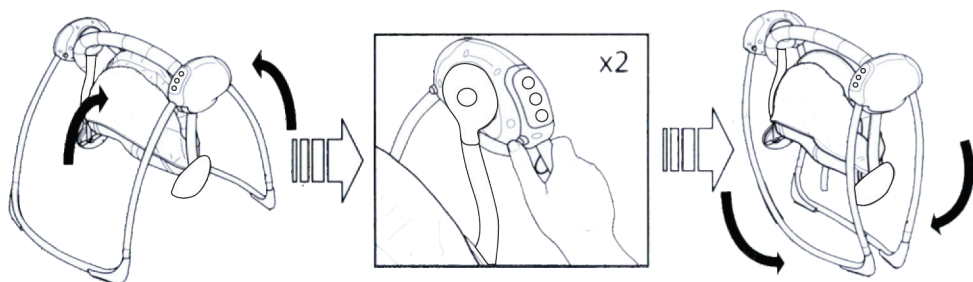
Pressing the centre button will cycle through the different swing speed options ranging from slow to intermittent.

Timer controls

Pressing the bottom button will activate the timer. One press for 10 minutes, another press for 15 minutes and another press for 30 minutes.



Storage and travel



Assembly instructions

1. Press the buttons on the inside of the hinges and open the legs.
2. Connect the base frame tubes to the bottom of the legs ensuring the push pins have come through the holes.
3. Connect the rear and front seat frame supports to the swing section using the M4 screws provided.
4. Unthread the buckle straps on the back of the seat cover.
5. Slide the rear of the seat cover on to the rear seat support. Lift both seat frame supports upwards, slide the front of the seat cover on to the front seat support and then push both seat supports back down.
6. Ensure the shoulder harness is a snug fit around your child's shoulders by selecting one of three different height slots and rethread the buckle straps.
7. Using a Phillips screw driver, undo the battery compartment screw and pull the cover away.
8. Insert 4 x AA batteries observing the correct polarity.
9. Reattach battery cover.
10. Attach toy bar to the swing bars.

Using the seat harness

1. Flip the cover upwards and press the button in the centre of the harness clasp to release the straps.
2. Place your child in the seat, reattach the waist straps and pull the loose ends of the straps to take out any slackness.
3. Fold the harness cover back down and check the shoulder straps at the back of the seat for correct fitting. Adjust as necessary.

Storage and travel

1. Lift the seat supports upwards, push the release buttons on both side and slide the legs together.

General Care:

- The correct use and maintenance of this swing is essential.
- Always ensure swing is stored in a dry place to prevent mould or mildew developing.
- Avoid leaving your swing in direct sunlight for prolonged periods of time as this may cause premature fading of colours.

Cleaning:

- The seat cover and toys can be removed for washing. It should be washed on a cool and gentle cycle.
- Metal parts may be cleaned with a damp cloth and wiped dry with a soft cloth.
- Clean the harness, toys and toy bar with a mild soap and water solution. Rinse and wipe dry.
- Clean plastic parts with a mild soap and water solution. Rinse and wipe dry.
- Do not use abrasive cleaners or bleach.

Maintenance:

- Check that nothing is broken, torn or missing and that no sharp edges have been exposed. Stop using the swing immediately if any are found.
- Regularly inspect the swing for loose or damaged fittings and do not use it if it becomes damaged or broken. Check that all straps and harness attachment points are in good working order.
- Do not use replacement parts other than those approved by the manufacturer or distributor. Failure to do this may invalidate your warranty.

Safety Warnings:

- Your child's safety is your responsibility.
- WARNING! Never leave the child unattended.
- WARNING! Never use this product on an elevated surface (e.g. a table).
- WARNING! This product is not intended for prolonged periods of sleeping.
- WARNING! Always use the restraint system.
- WARNING! Do not move or lift this product with the baby inside it.
- WARNING! Do not use this product once your child can sit up unaided or weighs more than 9 kg.
- WARNING! To avoid injury ensure that children are kept away when unfolding and folding this product.
- WARNING! Not recommended for children who can sit up by themselves, 6 months approximately 9Kg [20lbs].
- WARNING! Never use the toy bar to carry the swing.
- Do not expose the swing to heat such as open fires or hot ovens and stoves.
- Keep all children away from the swing during set-up and folding including fixing of accessories (if applicable) and when not in use.
- To prevent injuries never use as a child restraint in any vehicle.
- This product does not replace a cot or a bed. Should your child need to sleep, then it should be placed in a suitable cot or bed.
- Trailing electrical flexes must be guarded.
- Do not use near stairs or steps.
- Do not adjust with the baby in the swing.
- Ensure safety straps are fastened and correctly adjusted at all times.
- Do not use once the child starts to sit up unaided.
- This swing is not intended for prolonged periods of sleeping.
- Always make sure that the battery compartment is secured with the screw before use.

This product complies with

Complies with BS EN 16232 : 2013

For all technical queries please call:

01454 326 568

The RedKite logo features the brand name in a stylized, hand-drawn red font. The 'K' is particularly large and has a small kite icon integrated into its upper loop. A registered trademark symbol (®) is positioned to the upper right of the 'K'. A small red kite icon is also visible at the bottom of the 'e'.

Product Usage Information:

This swing is intended for use by babies from birth to 6 months weighing less than 9kg (20lbs), who cannot sit up unaided. You must discontinue use of this product when your child is able to sit up unaided. The swing is designed to soothe and entertain your baby.

Extra Care:

As a parent or carer of children, we know that safety is of uppermost concern. Whilst this product has been developed to all of the relevant safety standards, we need your help to maintain that level of safety and minimize the risk that a baby using this product will be harmed. Your baby should never be left alone in the swing and all tempting objects should be kept out of your child's reach.

Battery Information:

- Batteries must only be installed by an adult.
- Always keep batteries and tools out of reach of babies and children.
- Always remove spent batteries from the toy to avoid the danger of leakage from the battery which can be dangerous and damage the product.
- Remove the batteries if the toy will not be used for a long period of time.
- Only use alkaline batteries of the same type or equivalent to the type recommended for the correct function of this product.
- Never mix new and old or different types of batteries.
- When fitting new batteries, always ensure that they have been fitted in the correct polarity (as shown on the product).
- Do not burn or dispose of spent batteries into the environment. Dispose of them at an appropriate differentiated collection point.
- Do not short circuit the battery terminals.
- Never attempt to recharge non-rechargeable batteries, they might explode.
- Exhausted batteries are to be removed from the toy.
- Rechargeable batteries are to be removed from the toy before being charged.
- Rechargeable batteries are only to be charged under adult supervision.
- Waste products should not be disposed of with household waste. Please recycle where facilities exist. Check with your local authority or retailer for recycling advice.

