



## Parts List



### To open the bouncer

Lift the seating section upwards and slot the height adjustment bar into one of the three openings. Push downwards on the seat area until you hear it click in place.

Fig 1.

### To adjust and close the bouncer

With one hand on the floor frame, pull forward on the seat frame to unclip the adjustment bar from the bracket. Select new height position or pull the clip (A) upwards which will allow the bouncer to be folded for storage and transportation.

Fig 2.

### To clean the bouncer cover

The cover can be removed by unclipping the elastic loops on the bottom and pulling the cover off. Always ensure the elastic loops are always attached to the clips before each and every use.

Fig 3.

### To use and secure the harness

The safety belt has two openings, one on each side. Press the centre button to release the belt and push together to secure it.

Fig 4.

### To attach the toy bar

TEXT ON HOW TO ATTACH THE TOY BAR Fig 5.

Fig 1

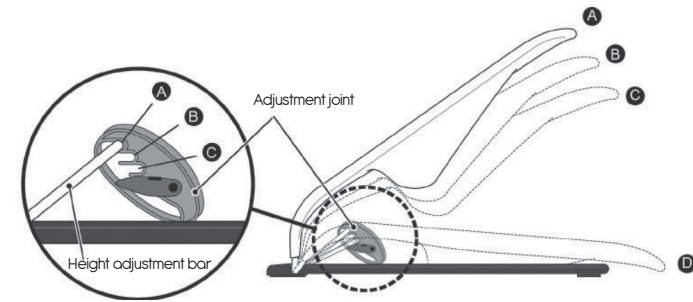


Fig 2

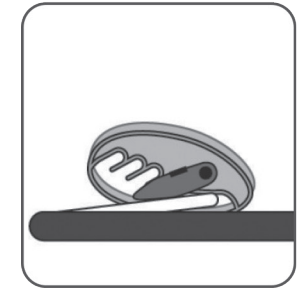
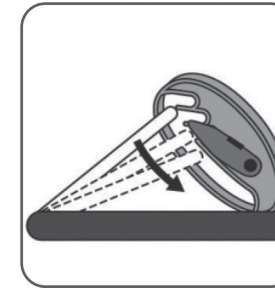
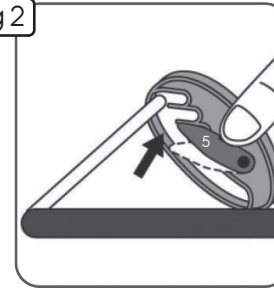


Fig 3

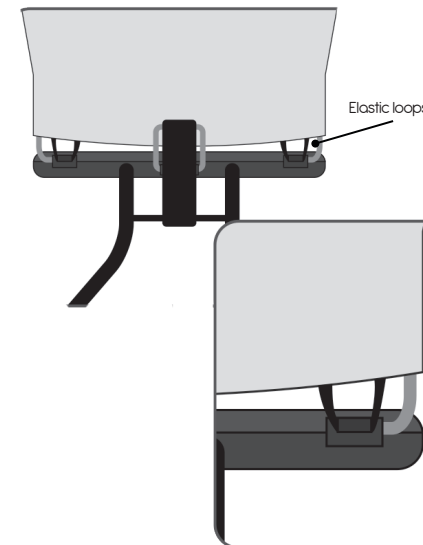
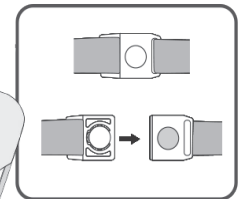


Fig 4



Fig

← Toy bar

Never use the toy bar to carry the reclined cradle. It is designed to easily detach if pulled.

## General Care:

- The correct use and maintenance of this reclined cradle is essential.
- In some climates mould and mildew can affect the fabric on the reclined cradle.
- Always store the reclined cradle in a dry place.
- This reclined cradle does not replace a cot or a bed. Should your child need to sleep, then it should be placed in a suitable cot or bed.
- Please dispose of packaging material as plastic bags can be dangerous to young children.

## Cleaning:

- The cover may be sponge cleaned in situ using a mild detergent solution.
- For heavy soiling the cover may be removed and washed on a gentle 30° cycle.
- Lie cover flat and dry in a well ventilated area out of direct sunlight.
- Do not use bleach, ammonia based or abrasive cleaning chemicals.
- Do not dry clean.
- The toys, frame and plastics may be cleaned with a damp cloth and a mild detergent solution and dried with a soft cloth.

## Maintenance:

- Regularly inspect all tubes and fixings. Ensure that all are secure before each use of the product.
- Do not use the reclined cradle if any components are broken or missing.
- Regularly inspect fabric and stitching and check that it is undamaged.
- Do not use accessories or replacement parts other than those approved by the manufacturer. Failure to do this may invalidate your warranty.

## Safety Warnings:

- **WARNING:** Your child's safety is your responsibility.
- **WARNING:** Do not use the reclined cradle once your child can sit unaided.
- **WARNING:** Never leave the child unattended.
- **WARNING:** This reclined cradle is not intended for prolonged periods of sleeping.
- **WARNING:** It is dangerous to put this cradle on an elevated surface, e.g. a table.
- **WARNING:** Always use the restraint system.
- **WARNING:** Never use the toy bar to carry the reclined cradle. Always ensure that the harness is fastened and adjusted at all times.
- Only use on a flat, level floor surface.
- Do not use near stairs / steps.
- Do not position the reclined cradle close to a source of heat e.g. household electric fires etc.
- Do not position close to items such as curtains and electrical flexes as they could pose a danger of suffocation or strangulation.
- Never use in a vehicle as a child restraint.
- Never pick the reclined cradle up when the child is in it.
- Do not adjust the reclined cradle when the child is in it.
- Store the reclined cradle out of the reach of children when not in use.
- Do not allow other children to play with the reclined cradle.

The product complies with  
BS EN 12790 : 2009.

Imported by The Red Kite Baby Co Ltd, 35 Lavenham Road,  
Beeches Industrial Estate, Yate, Bristol, BS37 5QX.

