

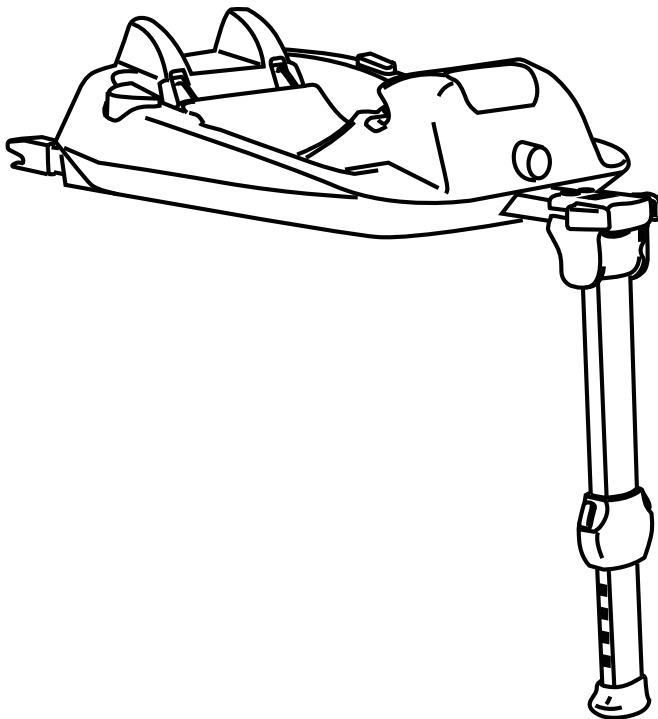


## IMPORTANT

Keep these instructions for future reference. Your child's safety may be affected if you do not follow these instructions.

Instruction Leaflet

Pace Isofix Base



Conforms to ECE R44.04 Universal.  
Customer Care Line: 01454 326 568

# Isofixbase instructions

## To install the Isofix base into the car

1. Pull the support leg downwards until it is vertical. Push the button on the front of the base and push forward on the top of the leg to extend the Isofix locking catches.

Fig 1.

2. Locate the Isofix anchorage points in the seat of your car and push the catches of the base firmly on to these points.

Fig 2.

3. Adjust the height of the support leg by squeezing the buttons on the sides until the leg is firmly on the ground.

Fig 3.

## To attach the car seat to the base

4. With the car seat facing rearwards, insert it on to the Isofix base and push down until it clicks in place.

Fig 4.

5. Rotate the car seat handle forward. Push the button on the front of the base and push the base forward until it fits snugly against the seat back rest of the car.

Fig 5.

NOTE. If leaving the Isofix base in the car, this will be the only time you would need to adjust it.

## To release the car seat from the base

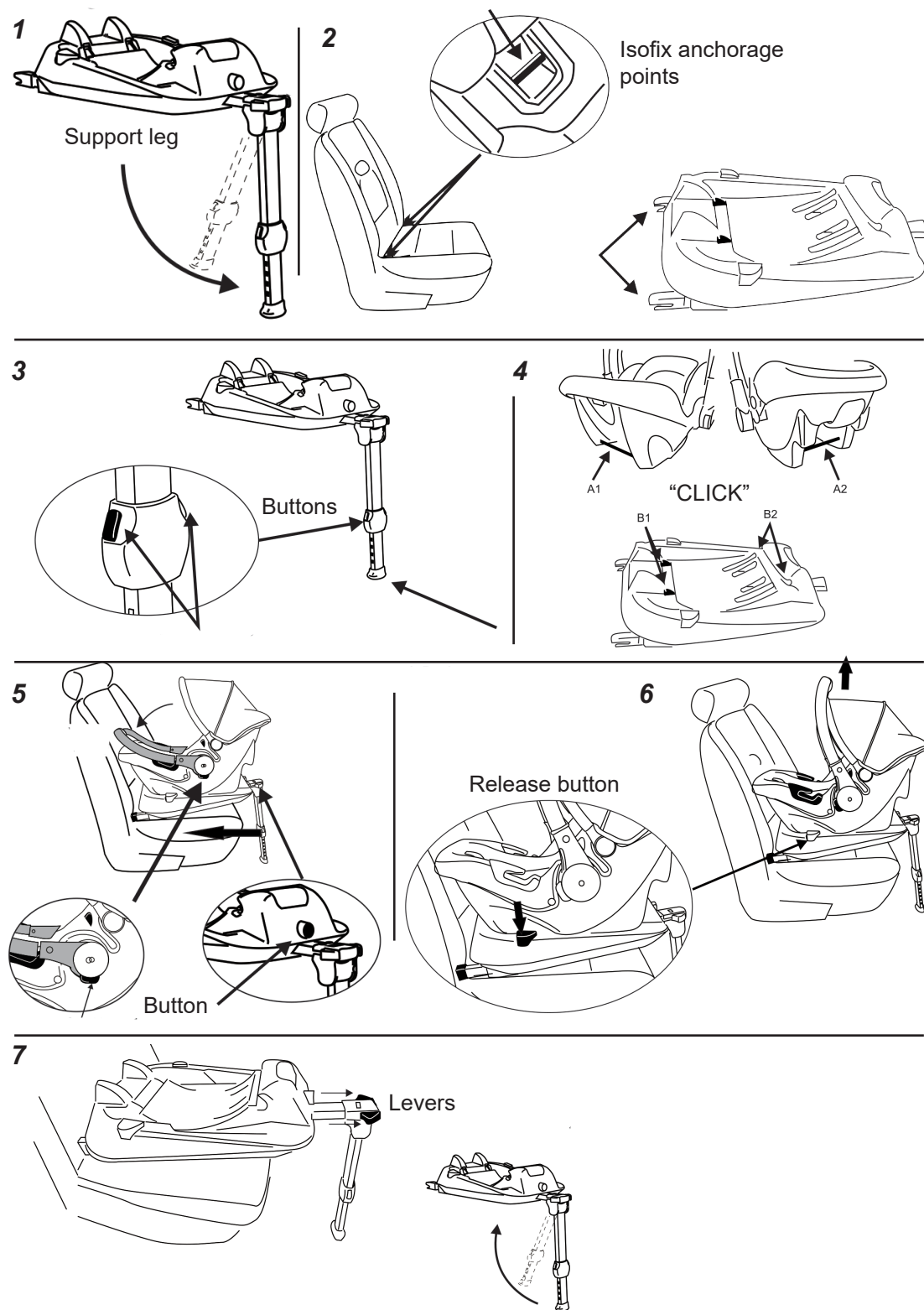
6. Rotate the car seat handle to the carrying position. Push the release button on either side of the base and lift the car seat off the Isofix base.

Fig 6.

## To remove the Isofix base

7. Pull the levers on the top of the support leg to remove the Isofix base from the car and fold the leg up.

Fig 7.



# Isofix Base Important Safety Information:

Read these instructions before fitting the Isofix base in your car so that you are familiar with it and avoid any potentially dangerous misuse.

The Pace Isofix base has been subjected to all safety tests and is approved under European standard ECE R44/04, for children of weight from 0 to 13 kg.

For the maximum protection and comfort of your child, it is essential that you read through the entire manual carefully and follow all instructions.

This base is classified as "Universal" and is suitable for most vehicles. Consult your vehicle manufacturers handbook if in doubt. **IMPORTANT:** Seat positions in other cars may also be suitable to accept this child restraint. If in doubt, consult either the child restraint manufacturer or the retailer.

In case you want to check if your child restraint is installed correctly on the base, please release the car seat from the base and put it back on. If the indicator panel lights all turn green your child restraint is installed correctly.

- **WARNING:** Read the instructions carefully before use and retain for future reference. Failure to closely follow the installation instructions for the Isofix base will put your child at risk.
- The assembly and installation operations must be conducted by adults.
- Avoid inserting fingers into the mechanisms.
- Death or serious injury can result if this Isofix base is installed on seats with airbags.
- Eliminate danger by disabling airbags surrounding the position of the car safety seat.
- In the case of rotating or movable seats it is important to install this safety seat facing opposite to the normal forward movement of the vehicle.
- Do not use installation methods different from those indicated. This could result in the risk of detachment from the infant carrier.
- Make sure that the Isofix base is protected from any mobile parts of the car seat or doors.
- Do not modify the product.
- Do not use this car safety seat after five years from the date of production indicated on the structure. The natural aging of the materials may mean that it may no longer be compliant with standards.

For all technical queries please call: 01454 326 568

Imported by:

The Red Kite Baby Co Ltd, 35 Lavenham Road, Beeches Industrial Estate, Yate, Bristol, BS37 5QX