

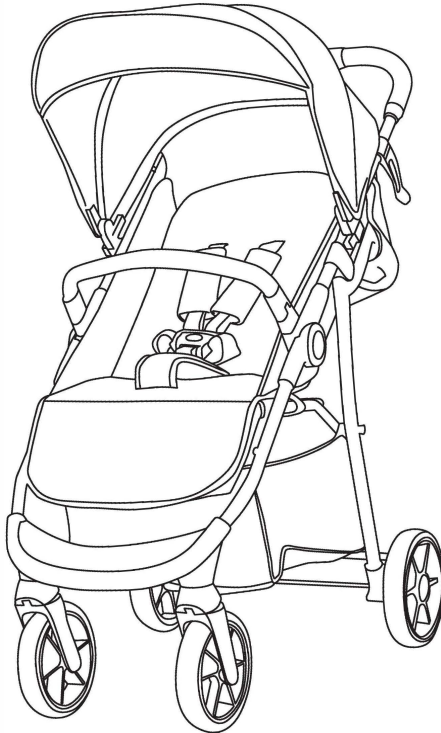
red kite

IMPORTANT

Keep these instructions for future reference. Your child's safety may be affected if you do not follow these instructions.

Instruction Leaflet

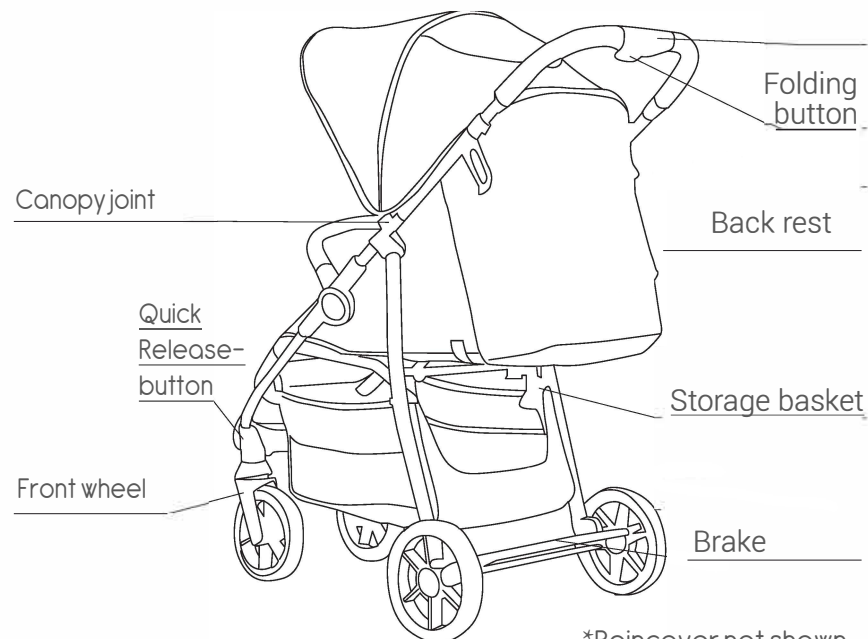
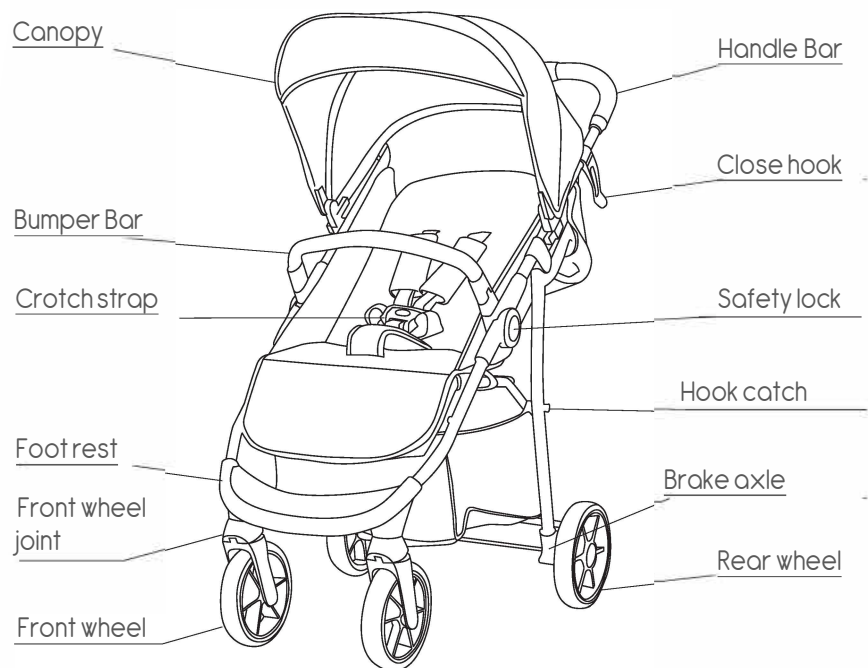
Push Me Quad



This vehicle is intended for children from birth up to a maximum weight of 22 Kgs or 4 years whichever comes first.

EN 1888-2 : 2018
Customer Care Line: 01454 326 568

PARTSLIST



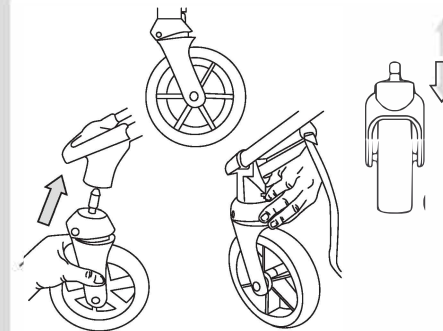
*Raincover not shown

ASSEMBLY

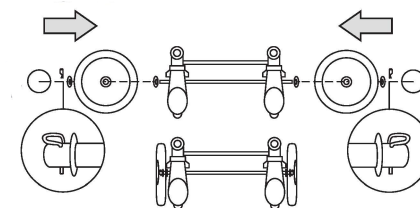
- 1** To open the stroller. Pull the locking catch outwards and lift the handle upwards to lock the frame in place. **WARNING** Ensure that all the locking devices are engaged before use.



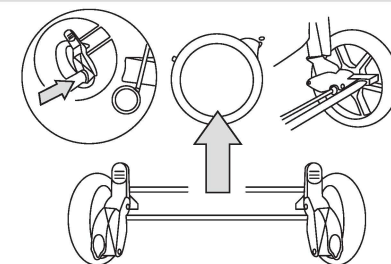
- 2** To install the front wheels. Push the stems of the front wheels into the frame until it clicks in place. Pull down gently to ensure they're attached correctly. Push in the clip on the back of the wheel unit to remove the wheel.



- 3** To assemble the rear wheels. Slide one of the washers onto the axle, then slide the rear wheel on to the axle, add the washer and then push the straight edge of the R clip through the small hole in the end of the axle. Push the hub cap in to the center of the wheel.



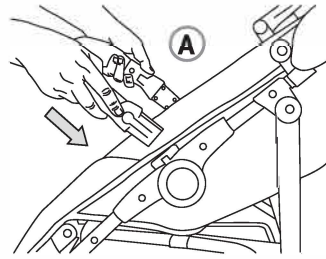
- 4** To attach the brakes. Slide the axle brake unit on to the rear legs until the push pins are visible through the holes.



5

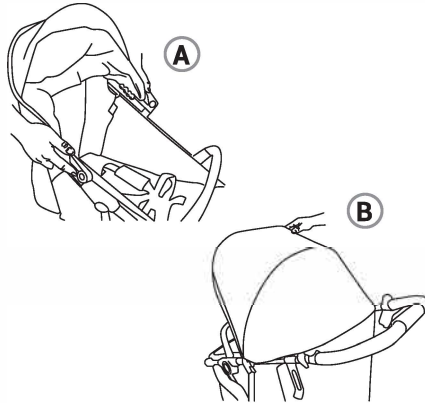
To attach the bumper bar.

Push the bumper bar in to the joints on the side of the frame. To remove the bumper bar, press the button on the side and pull out.



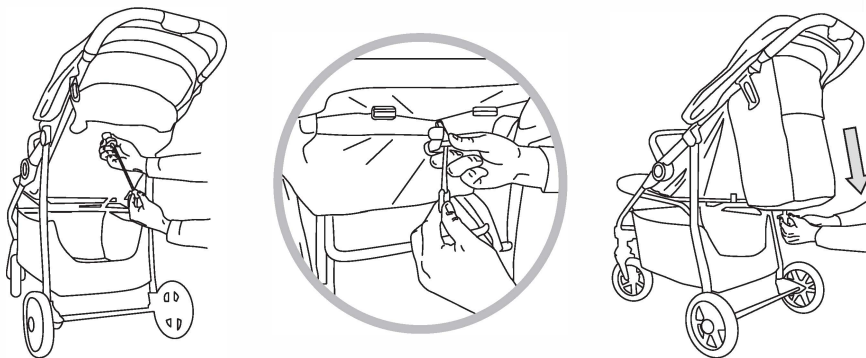
6

To attach the hood. Slide the brackets on the ends of the hood on to the blocks on each side of the frame. Push or pull the front of the hood to open or close the hood.



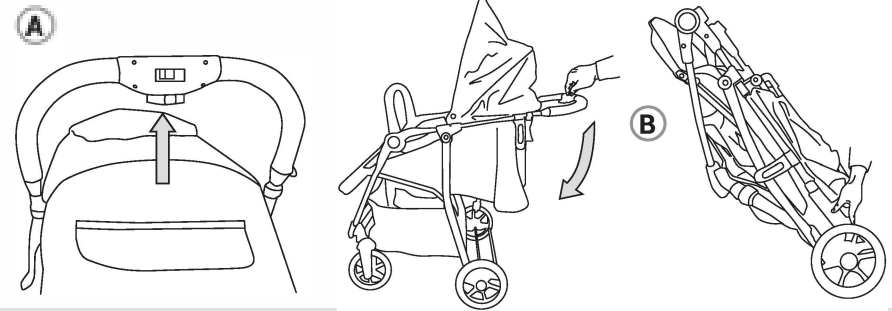
7

To operate the backrest. To lower the back rest, squeeze the clasp on the back and pull downwards. To raise the seat, hold the end of the strap, squeeze the clasp and push forward.



8

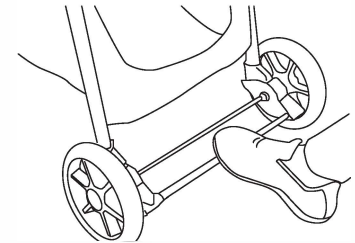
To fold the stroller. Fold the hood, slide button A to the side and then squeeze button B and lower the handle downwards. The locking catch will automatically engage.



9

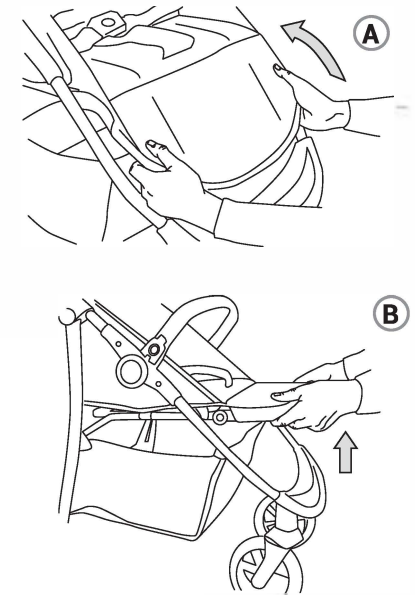
To use the brakes. To operate the brake, press down on the linking brake bar to engage them or lift upwards to release the brakes.

WARNING Apply all the brakes whenever you park the stroller.



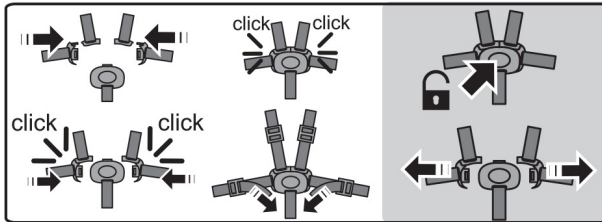
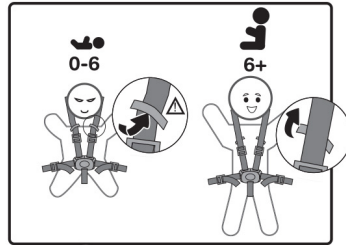
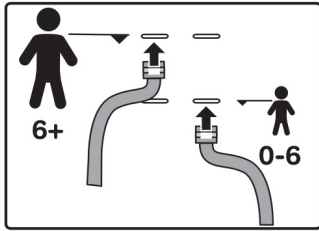
10

To adjust the foot rest. Squeeze the triggers on each side of the leg rest to select desired position.



To secure and adjust the harness.

Slide the waist straps on to the shoulder straps and push into the crotch strap to attach the harness. Press the button in the center of the crotch strap to release the harness. Adjust the waist and shoulder straps by means of the slides to achieve a snug comfortable fit.



WARNING! For babies aged 0 – 6 months the harness must be fed through the retaining loops to prevent risk of strangulation.

WARNING Always use the crotch strap in combination with the waist belt.

General care:

- The correct use and maintenance of this stroller is essential.
- Do not use excessive force when folding the stroller.
- If you are having problems, fully open the stroller and repeat the folding procedure.
- Always let wheels down as gently as possible when mounting and dismounting kerbs.
- Always fold the stroller when going up or down stairs.
- Never bump the stroller over these or similar obstacles.
- In some climates mould and mildew can affect the fabric and rain cover. To avoid this, do not fold the stroller when it is wet. Leave it open in a ventilated area until completely dry.
- Always store the stroller in a dry place.
- When storing the stroller in the car, never place other items on top of it.
- Do not exceed the maximum load of 2 kgs in the shopping basket. (Where provided).

Cleaning:

- Fabric covers and trims may be spot washed using mild detergent and warm water. Leave to dry in a ventilated area away from direct sunlight.
- Avoid leaving your stroller in direct sunlight for prolonged periods of time as this may cause fabrics to fade.
- Do not dry clean, machine wash or tumble dry.
- Metal parts may be cleaned with a damp cloth.
- Always wipe dry. Clean plastic parts with a mild soap and water solution, wipe dry.

Maintenance:

- Maintain your stroller by lubricating all metal moving parts with a silicone based spray. Do not use heavy machine oil or grease as this can attract dirt or grit.
- Check that nothing is loose or broken and that no sharp edges have been exposed. Inspect all joints and the harness, replace any damaged parts immediately.
- Inspect any nuts and bolts regularly to ensure none have worked loose. Tighten as necessary.
- Only use replacement parts and accessories that have been approved by the manufacturer. Failure to do this may invalidate your warranty.

Safety warnings:

- **WARNING** Never leave your child unattended.
- **WARNING** To avoid injury ensure your child is kept away when unfolding and folding this product.
- **WARNING** Do not let your child play with this product.
- **WARNING** Always use the restraint system.

WARNING This product is not suitable for running or skating.

- **WARNING** Your child's safety is your responsibility.
- **WARNING** Any load attached to the handle affects the stability of the pram / pushchair.

WARNING! For babies aged 0 – 6 months the harness must be fed through the retaining loops to prevent risk of strangulation.

- For newborns, it is safest to use the seat unit in the fully reclined position.
- This stroller is designed for and to be used by one child only.

Before folding the stroller check the following:

- Your child is clear of moving parts
- The rear brakes have been applied
- The front wheels are secured in the locked mode (if applicable)
- The seat unit or car seat has been removed
- All items have been removed from the basket
- Never attempt to close or fold the stroller with the child inside

BS EN 1888–2:2018

For all technical queries please call:

01454 326 568

Manufactured by: The Red Kite Baby Co Ltd, 35 Lavenham Road, Beeches Industrial Estate, Yate, Bristol, BS37 5QX. UK