

red kite

IMPORTANT

Keep these instructions for future reference. Your child's safety may be affected if you do not follow these instructions.

Instruction Leaflet

Savanna i Car Seat



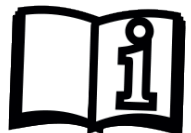
Approved to UN Regulation NO.129.03 standard for general use in vehicles and will fit most, but not all, vehicle seats



Rear Facing Infant Carrier: R129 Universal

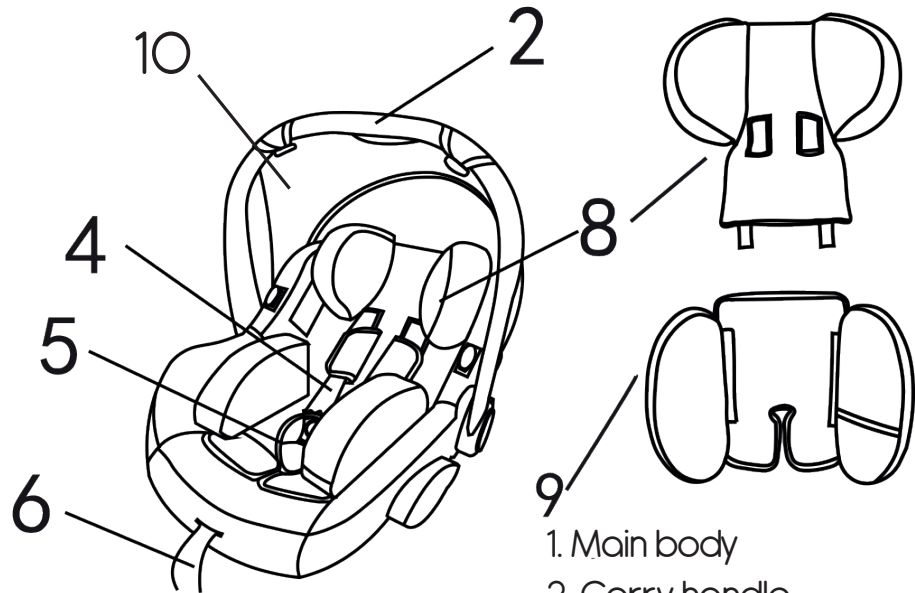
For infants up to 13kg. Category: 40 - 85 cm

Customer Care Line: 01454 326 568

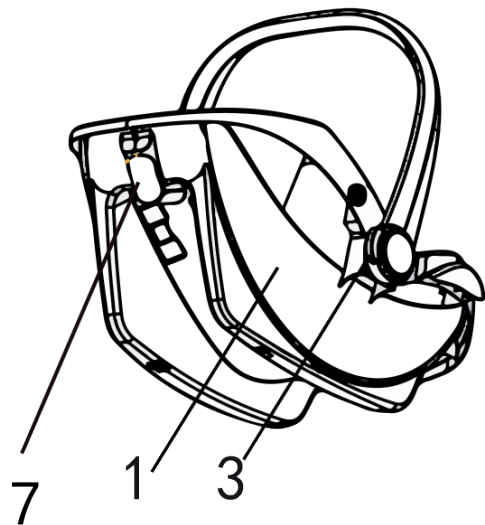


Compatible with the Red Kite i Dock ISOFIX base. Sold separately.

Parts list



1. Main body
2. Carry handle
3. Handle adjuster button
4. Shoulder straps
5. Harness buckle
6. Harness adjustment strap
7. Diagonal belt guide
8. Head cushion
9. Bottom liner padding
10. Canopy



IMPORTANT

Bottom liner

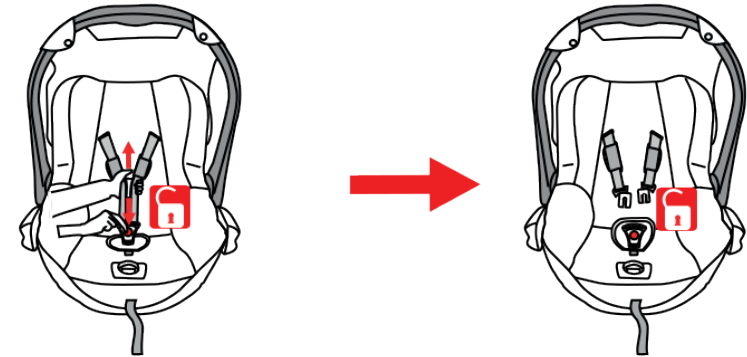
When the child's height is 40 - 75cm, the lower cushion must be used.
When the child's height is 75 - 85cm, the lower cushion may be removed.

Head cushion

The head cushion must be used at all times. The head cushion has two removable pieces of foam in each side which may be removed in stages as your child grows. The foam is accessible through the Velcro opening on the back of each side of the head cushion.

To operate the harness

1. Open the harness buckle by pressing the red release button in the centre of the buckle.
2. Place your child into the car seat.
3. Place the shoulder straps over the shoulders of your child and ensure none of the straps are twisted.



To secure and adjust the harness

Slot the two finger sections of each shoulder strap together (as you face the car seat, the left side goes in front and on top of the right side).

Push the connected sections into the top of the buckle until they click in place.

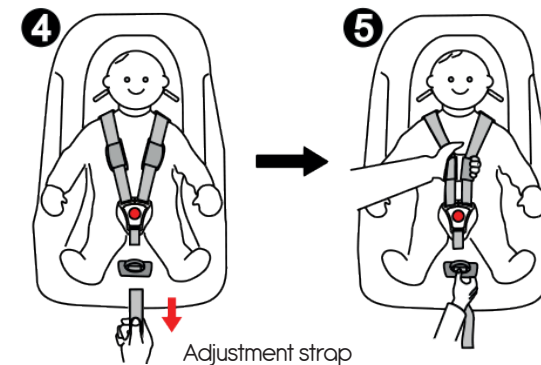
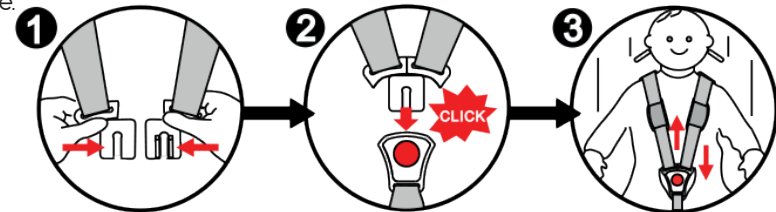
NOTE. There will be an audible "click" when the buckle is connected correctly.

Check the harness is locked in place by pulling above and below the buckle.

Tighten the harness by pulling on the adjustment strap that comes out of the front of the car seat until you achieve a snug comfortable fit.

NOTE. Make sure you can not fit more than one finger (approx 1cm) between the harness and your child's body.

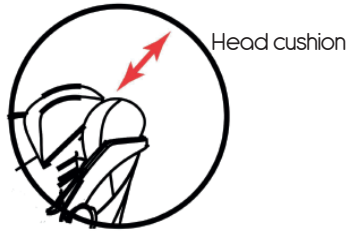
To loosen the harness, press down on the adjuster release button and pull both shoulder straps at the same time.



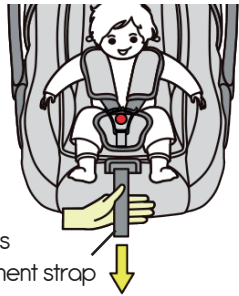
To secure and adjust the harness

On every use, make sure the child is securely fastened with these checks.

1. The shoulder straps are a snug comfortable fit against your child's body.
2. The height of both shoulder straps are correct.
3. There are no twists or kinks in the straps.
4. The shoulder straps are fully inserted into the centre crotch buckle.



Head cushion



Harness adjustment strap

To change the height of the harness

Unclip the shoulder straps from the buckle and thread the strap through the car seat shell. Select the correct height and re thread the straps through the correct slot.

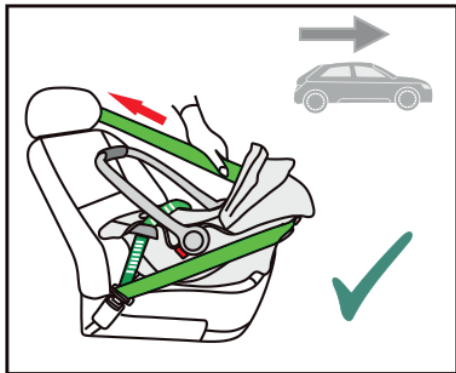
Tighten the shoulder straps by pulling down on the adjustment strap coming through the front of the seat.

To use in the vehicle

DANGER! Never place the car seat on your lap. Always use the vehicle's 3 point safety belt to secure the car seat or an i Dock ISOFIX base. i Dock ISOFIX base is available separately.

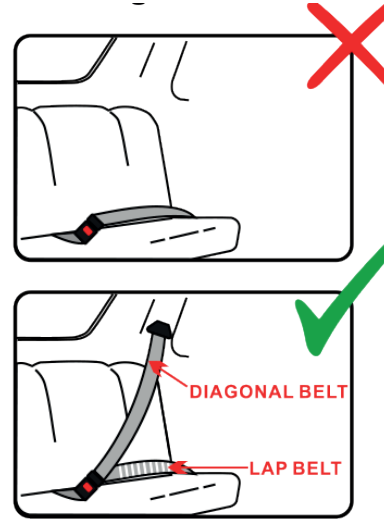
DANGER! The car seat must only be secured rearward facing, in the opposite direction of travel.

The car seat must only be secured to a vehicle seat that does not have air bags. If the car seat is placed in a vehicle that has air bags, they must be deactivated. Refer to the vehicle owner's manual on how to do this.



Fitting the car seat into the vehicle

WARNING: This car seat can only be fitted into the front passenger seat of a car with a 3 point lap and diagonal seat belt or ISOFIX base with no vehicle air bag or the air bag has been deactivated. The car seat can only be installed rearward facing using a 3 point lap and diagonal seat belt or ISOFIX base.



Only suitable if the vehicle is fitted with a 3 point static retractor safety belt approved to UN/EC Regulations No.16 or equivalent standard.

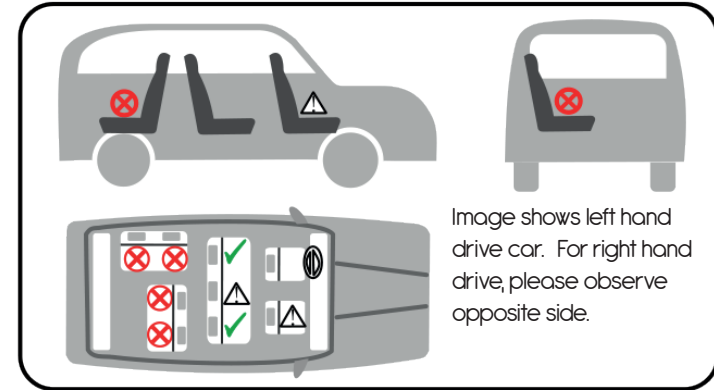


Image shows left hand drive car. For right hand drive, please observe opposite side.

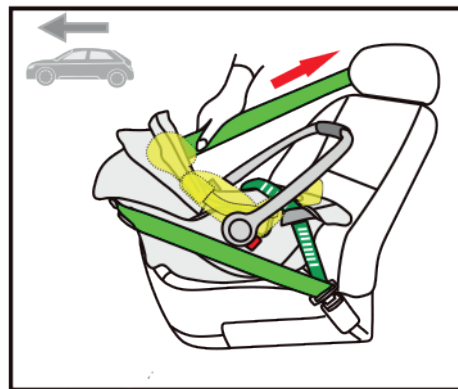
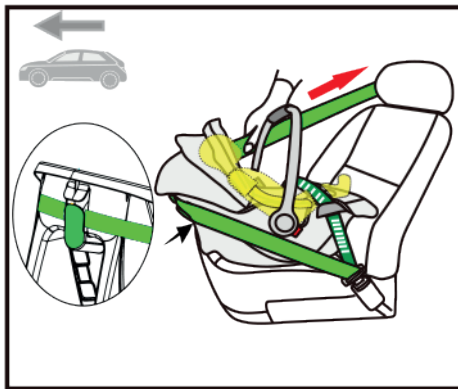
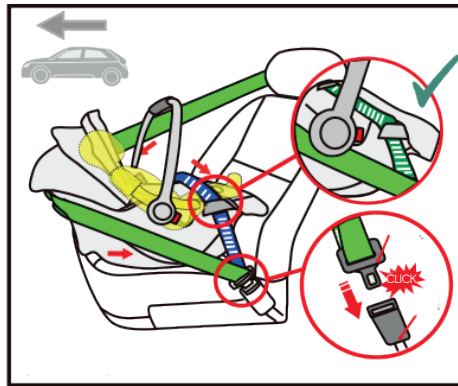
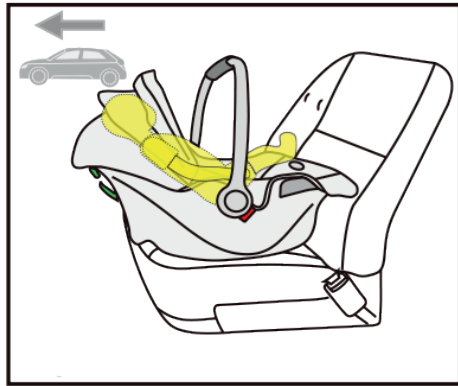
✓	On outer rear seat	YES
⚠	On front passenger seat without front airbag	YES
⚠	On centre rear seat with 3-point belt	YES
✗	On a rearward-facing seat	NO
✗	On seats facing sideways	NO

Fitting the car seat into the vehicle

WARNING!

Do not use any other contact points for when attaching the vehicle safety belt other than those marked in this manual.

1. Install the car seat on to the vehicle seat rearward facing and ensure the front of the car seat is as close as possible to the vehicle's back rest.
2. Thread the lap belt of the vehicle safety belt through the guides on the sides of the carseat and insert the tongue of the vehicle safety belt into the vehicle safety belt buckle.
3. Pull the shoulder strap of the vehicle safety belt around the back of the car seat and thread it into the guide. Pull the vehicle safety belt to tighten it.
4. Check all harnesses and safety belts for tightness and ensure there are no twists or kinks. Detach the canopy and adjust the handle of the car seat forward towards the vehicle's back rest.

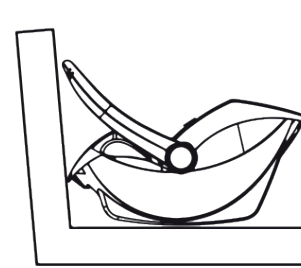


Handle adjustment and positioning

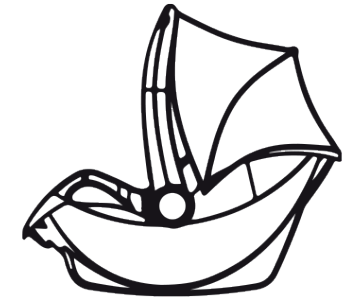
To adjust the handle, press in the buttons on each side on the bottom of the handle and rotate to the desired position.

NOTE: When the handle is in a correct position you will hear an audible click and the buttons will pop out.

The handle has 4 different positions:



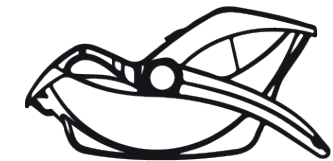
1. For vehicle installation with handle forward



2. For carrying



3. Rocking mode.



4. Static mode.

General care and maintenance:

- After removing the bottom liner padding, please store it somewhere that the child cannot access it.
- Fabric covers and trims may be hand washed using mild detergent and warm water. Leave to dry in a ventilated area away from direct sunlight.
- Do not dry clean, bleach, machine wash or tumble dry. Do not twist the seat cover and inner padding in an attempt to dry. It may leave the seat cover and inner padding with wrinkles.
- Avoid leaving the child restraint in direct sunlight for prolonged periods of time as this may cause fabrics to fade.
- Metal parts may be cleaned with a damp cloth. Always wipe dry.
- Clean plastic parts with a mild soap and water solution, wipe dry.

Safety warnings:

- WARNING! No car seat can guarantee full protection from injury in the event of an accident. However, proper use of this car seat will reduce the risk of serious injury or death to your child.
- To use this car seat with a vehicle seat belt or ISOFIX base your child's height must be 40cm–85cm / weight < 13kg (Child age < 12months).
- WARNING! DO NOT install this car seat without following the instructions in this manual or you may put your child at serious risk of injury or death.
- WARNING! NEVER leave your child unattended in this car seat.
- WARNING! DO NOT make any modification to this car seat or add component parts from other manufacturers.
- WARNING! DO NOT use this car seat if it has damaged or missing parts.
- WARNING! DO NOT have your child in large or oversized clothing because this may prevent your child from being properly and securely fastened by the shoulder harness straps and the crotch strap between the legs.
- WARNING! DO NOT use this car seat without the soft goods.
- WARNING! The soft goods should not be replaced with any other items other than the ones recommended by the manufacturer. The soft goods constitute an integral part of the car seats performance.
- WARNING! To use this car seat with the vehicle belt / ISOFIX base, the following requirements must be met: Any straps holding the enhanced child restraint to the vehicle should be tight. Any support–leg should be in contact with the vehicle floor; any straps restraining the child should be adjusted to the child's body, and that straps should not be twisted.

- WARNING! DO NOT put anything other than the supplied inner cushions in this car seat.
- WARNING! Ensure that the car seat is installed in such a way that no part of it interferes with movable seats or in the operation of vehicle doors.
- WARNING! To avoid the risk of falling out, always secure the child using the child harness when the child is placed in the car seat, even when it is not in the vehicle.
- WARNING! Before lifting the car seat, ensure that the child is fastened with the child harness, and that the handle is correctly locked in a vertical position.
- WARNING! To avoid serious injury or death, NEVER place the car seat on an elevated surface with a child in it.
- WARNING! The parts of this car seat should not be lubricated in any way.
- WARNING! Always secure child in the car seat, even on short trips, as this is when most accidents occur.
- WARNING! DO NOT continue to use this car seat after it has suffered any type of impact/crash, even a minor one. Replace immediately as there may be invisible, structural damage from the impact/crash.
- WARNING! Remove this car seat and ISOFIX base (if used) from the vehicle seat when it is not in regular use.
- WARNING! DO NOT leave this car seat or other items unbelted or unsecured in your vehicle as it could injure other occupants of the vehicle.
- WARNING! DO NOT place a rear–facing car seat on front seat with activated front airbag. Death or serious injury may occur. Please refer to the vehicle owner's manual for more information.
- WARNING! DO NOT use any load bearing contact points other than those described in the instructions and marked on the car seat.
- WARNING! Please do not use this car seat if it has been dropped from a significant height, hit the ground at a considerable speed, or has visible signs of damage.
- Consult Red Kite for issues concerning maintenance, repair, and part replacement.

For all technical queries please call: 01454 326 568

Manufactured by: The Red Kite Baby Co Ltd, 35
Lavenham Road, Beeches Industrial Estate,
Yate, Bristol, BS37 5QX. UK